

WELCOME TO THE FUTURE : LOGISTICS SERVICE & SOLUTIONS



INDIA*JAPAN*SINGAPORE



MANAGEMENT TEAM



VISIT US ON: WWW.IRCGROUPGLOBAL.COM

INDIA*JAPAN*SINGAPORE

LEADERSHIP



Ashok Gupta
Chairman & Managing Director

A graduate from St. Xavier's College Kolkata, with multi industry manufacturing expertise of over 40 years and with passion and urge has created many a new and out of the box logistic solutions. Many of the multinational companies has benefited greatly in terms of innovating solutions.



Keiji Nakajima
Director

With business experience of 42 years in India, and as the head of Automotive Division of Sumitomo Corp., Nakajima San has shown IRC the path towards greater heights & achievements, towards our understanding of the Japanese business culture and also to abide the same in our company culture to be able to serve Japanese companies.



C.K. Dave
Director

C.K. Dave is a post graduate in ME from Indian Institute of Science, Bangalore. He worked with BHEL Hardwar for 9 years. He joined Maruti Suzuki in 1984 and worked for 30 years and retired as Executive Director. Currently, he is engaged with Asahi India Glass Ltd. as Advisor- Consumer Glass.

MANAGEMENT TEAM



Pravesh Kumar
Director Marketing

Post Graduate in Marketing from IIPM, implementing advanced strategies, redesigning business processes with QCD for the clients with in-depth expertise of logistics.



Aradhya Gupta
Director

Post Graduate from S.P.Jain with expertise in operational excellence, has transformed to group's capability to achieve the highest standards in QCD and track & trace ability with high end technology solutions.



Kenichi Tanaka
Manager Sales – Japan Desk
(India)

Head of the Japan desk for business development and execution strategy to ensure better understanding of the Japanese standards & business practices.

MANAGEMENT TEAM



Y Shimizu

Chief Representative – Japan
Office

A professional with over 40 years of International Forwarding experience in Shipping lines like Maersk and Mitsui O.S.K & as the operations planner at the Tokyo International Container Terminal.



Harikumar

V.P. – Contract Logistics

With over 20 years of industry experience, Harikumar heads the Warehousing & 3PL – division, with an expertise in designing efficient and cost effective solutions.



Mr. Prakash Rao

DGM Head – Operation & HR /
Admin

MBA from Mumbai University in Human Resource and Operation Management with a 18 years of experience in the Logistics and facilities management, leads the complete fleet management and Human Resource Planning.



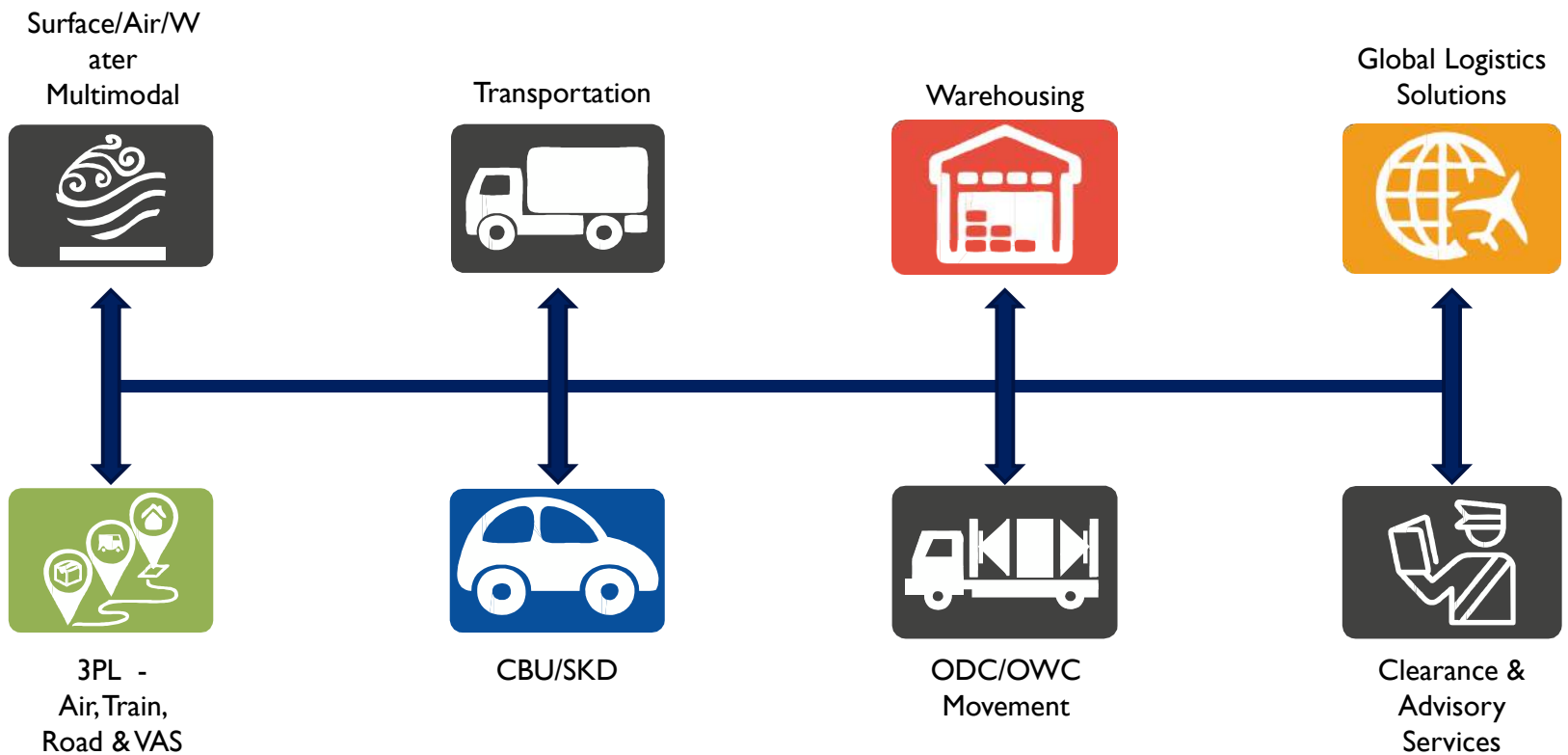
PRODUCT PORTFOLIO AND USP



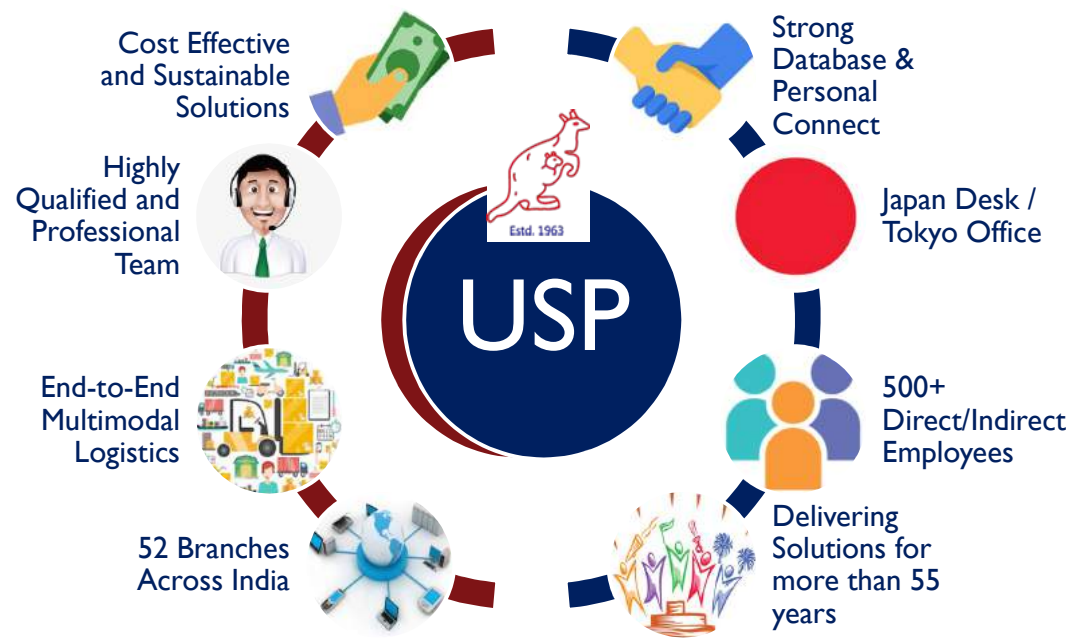
VISIT US ON: WWW.IRCGROUPGLOBAL.COM

INDIA*JAPAN*SINGAPORE

PRODUCT PORTFOLIO



UNIQUENESS





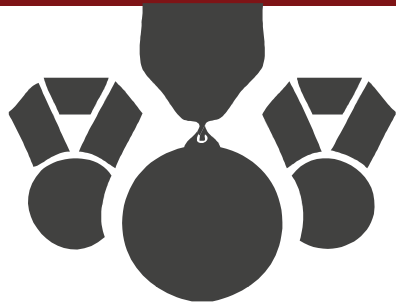
MILESTONES



VISIT US ON: WWW.IRCGROUPGLOBAL.COM

INDIA*JAPAN*SINGAPORE

JOURNEY & ACHIEVEMENTS



Kick off

- 1963, started as a partnership firm in Kolkata
- 1972, Started warehousing operations

Milestones

- 1979, Converted to Limited Company
- 1985, JV in electronics with S. Korean company
- 1993, Started Project freight division
- 1995, Started Shipping div

2011, Birth of IRC Supply Chain Solutions Ltd. end-to-end integrated multi-modal logistics solutions provider

2014, Acquired land in Gujarat, for Automotive Logistics Centre.

2015 Recd. AEO status

2015 Recd. ISO certification

2017, Inauguration of IRC Logistics Center at Becharaji, Gujarat

VISIT US ON: WWW.IRCGROUPGLOBAL.COM

INDIA * JAPAN * SINGAPORE

CERTIFICATIONS/AWARDS

- IBA (Indian Banking Association)
- AITWA (All India Transporters Welfare Association) – Mr.Ashok Gupta is Hon. National General Secretary of AITWA
- FFFAI (Federation of Freight Forwarders' Associations in India)
- ACFI (Air Cargo Forum of India) – Managing Committee Member in Import process simplification committee
- AMTOI (Association of Multimodal Transport of India)
- MTO (Multimodal Transport Operators)
- CHA (Customs House Agent)
- Logistics Business Partner Award
- WCA (World Cargo Alliance)



CERTIFICATIONS/AWARDS



Nozaki San, Kapoor San and Ayukawa San of Maruti Suzuki presenting the award-2017.

1. 2006 Award received from GLAXO for more than 25 yrs. of growing together
2. 2008 Business Sphere Award
3. 2013 Mahindra Logistics - Business Partner Award
4. 2017 Received “Best Logistics Partner” award from Maruti Suzuki
5. 2018 Smart CHA Award By Smart Logistics Summit
6. 2018 Northern India Multimodal Logistics Award – Conquest 2018

ACCREDITATIONS



AEO Certification

An AEO is an Internationally recognized term for the movement of goods on behalf of its national Customs administration as complying with WCO (World Custom Organization).



MTO Certification

Certification proof that IRC is a "registered multimodal transport operator".



ISO Certification

Certification for quality management systems.



BUSINESS



VISIT US ON: WWW.IRCGROUPGLOBAL.COM

INDIA*JAPAN*SINGAPORE

OUR JAPANESE CLIENTS



1. Import of Components, Dies & Moulds, Steel Coils etc.
2. Export of Auto parts.
3. Managing end-to-end 3PL.
4. Regular coordination for JIT deliveries.
5. Maintaining inventory of multiple vendors at Warehouse and arranging JIT deliveries.
6. CBU Air Export
7. Custom Clearance of critical shipment by Air.
8. Domestic transportation for distribution of Spare parts to dealers.
9. De-stuffing of steel coils from SOC containers.

OUR JAPANESE CLIENTS



Suzuki Motors

- Import of Components, Dies & Moulds, Steel Coils etc.
- Export of Auto parts.
- Managing end-to-end 3PL.
- Regular coordination for JIT deliveries.
- Maintaining inventory of multiple vendors at Warehouse and arranging JIT deliveries.
- CBU Air Export
- Custom Clearance of critical shipment by Air.
- Domestic transportation for distribution of Spare parts to dealers.
- De-stuffing of steel coils from SOC containers.

OUR JAPANESE CLIENTS



Sumitomo Corporation

- Export for Thailand, Indonesia, China
- Import Custom Clearance



Unicharm India Ltd.

- Export to Sri Lanka, Maldives, Mauritius, Bangladesh, Seychelles, Cameroon



JFE Steel Corporation

- Import from Japan
- Import Custom Clearance & Last leg delivery
- Import Breakbulk Clearance & Last leg delivery



Metal One

- Import from Japan
- Import Custom Clearance & Last leg delivery

OUR JAPANESE CLIENTS



Nifast India (Metal One)

- Managing end-to-end 3PL of Nifast.
- Regular coordination with SMG team for JIT deliveries.
- Maintaining inventory of the vendor at Warehouse.



Mytex Polymer

- Import Custom Clearance & Last leg delivery



Fujifilm

- Export Custom Clearance & Freight forwarding Air Shipment



Minda Kosei

- Warehouse & Inventory management
- Primary transportation
- Maintaining JIT deliveries to SMG

OUR JAPANESE CLIENTS



TTIPL, India

- Maintaining JIT deliveries to SMG for TTIPL customers.
- Export & Import Custom Clearance



Nippon Paints

- Import and Export Custom Clearance.
- Import from Thailand, United Kingdom, Italy



Mitshui Prime

- Export for Korea, Japan, China.
- Export & Import Custom Clearance



Paramount Bed

- Import from Japan, China, Indonesia



Okaya Power

- Import Custom Clearance & Last leg delivery

OUR JAPANESE CLIENTS

The logo for World Etching, featuring the company name in a blue, italicized serif font.

World Etching Premium Pvt. Ltd

- Import Custom Clearance & Last leg delivery.
- Import from Singapore

The Hitachi logo, consisting of the word "HITACHI" in bold black capital letters above the tagline "Inspire the Next" in a smaller font, all within a white rounded rectangle with a red horizontal bar at the bottom.

Hitachi Automotive

- Warehouse & Inventory management
- Primary transportation
- Maintaining JIT deliveries to SMG

The Tata Hitachi logo, featuring the words "TATA HITACHI" in bold black capital letters within a white rounded rectangle with an orange horizontal bar at the bottom.

TATA Hitachi

- Primary transportation

INDIAN CLIENTS

Auto Parts & OEs:



Medical equipment, Pharma & FMCG



Power Generation & Cables:



VISIT US ON: WWW.IRCGROUPGLOBAL.COM

INDIA*JAPAN*SINGAPORE

INDIAN CLIENTS

Construction Equipment:



Miscellaneous



VISIT US ON: WWW.IRCGROUPGLOBAL.COM

INDIA*JAPAN*SINGAPORE



IRC GROUP

IRC IS A LEADING "LOGISTICS SOLUTION PROVIDER" COVERING DOMESTIC AND INTERNATIONAL LOCATIONS WITH SPECIAL FOCUS ON SOUTH EAST & FAR EAST ASIA, EUROPE, AFRICA, CIS, NORTH AMERICA, NZ, AUSTRALIA, LATIN AMERICA, SOUTH AMERICA, CENTRAL ASIA, INDONESIA, THAILAND, JAPAN & MIDDLE EAST COUNTRIES.

VISIT US ON: WWW.IRCGROUPGLOBAL.COM

INDIA*JAPAN*SINGAPORE



CASE STUDIES



VISIT US ON: WWW.IRCGROUPGLOBAL.COM

INDIA*JAPAN*SINGAPORE

CASE STUDY (MRI)

- MATERIAL - MRI (Magnetic Resonance Imaging) Machine
- CHALLENGE - Logistics to Nepal from Netherlands via India
- WE DELIVERED WHAT WE PROMISE i.e. "CUSTOMISED INTEGRATED LOGISTICS SOLUTIONS"



VISIT US ON: WWW.IRCGROUPGLOBAL.COM

INDIA*JAPAN*SINGAPORE

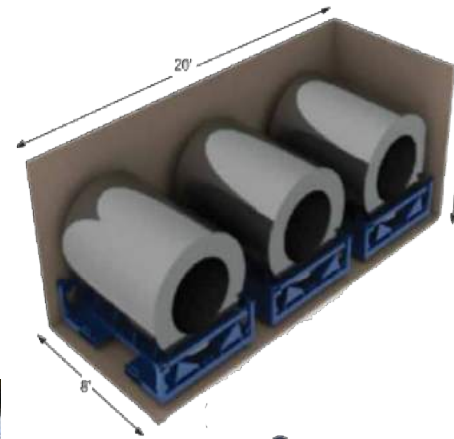
CASE STUDY (JCB)

- Containerising these Backhoe Loaders = Reduced handling as compared to RORO,
- Reduced chances of damage due to environmental aspects
- Higher frequency of deliveries as well as easier Inventory Management



CASE STUDY -MSIL COIL IMPORTS

- 3 Pallet fits in 20" container
- 1.6M coil on pallet
- Self stackable
- 1.0M coil on same pallet



VISIT US ON: WWW.IRCGROUPGLOBAL.COM

INDIA * JAPAN * SINGAPORE

ADVANTAGES OF MOVING COILS IN CONTAINER VS BREAK-BULK

Break Bulk

- Fortnightly Sailing
- Inventory Cost is high
- Transit Time till port (36-38 Days)
- Physical & weather damages
- Multiple handling by crude equipment
- Needs warehousing at Kandla
- High Inventory carrying Costs
- Weather Damages at ports
- High Insurance costs
- Dummrages at sea port
- Damages 2.9%

Containerized Cargo

- Weekly Sailing
- Better control on inventory
- Transit time till port (27-28 days)
- Cargo safe – No damages
- Single handling with special equipment
- NO Warehousing
- Better control on inventory
- No weather damages till dry port
- Savings in Insurance
- Free 14 Days at dry port
- Damages - NIL

VISIT US ON: WWW.IRCGROUPGLOBAL.COM

INDIA * JAPAN * SINGAPORE

CASE STUDY (AIRCRAFT)

- CHMATERIAL - Refurbished aircraft.
- ALLENGE – Complexities of import duty regulation & calculations.
- RESULT OF IRC SOLUTION - 70% cost saving.
- Custom clearance of Aircraft import



VISIT US ON: WWW.IRCGROUPGLOBAL.COM

INDIA * JAPAN * SINGAPORE



IRC LOGISTICS CENTRE, BECHARAJI, GUJARAT



VISIT US ON: WWW.IRCGROUPGLOBAL.COM

INDIA*JAPAN*SINGAPORE

IRC LOGISTICS CENTRE BECHARAJI, GUJARAT, INDIA



Designer's Image

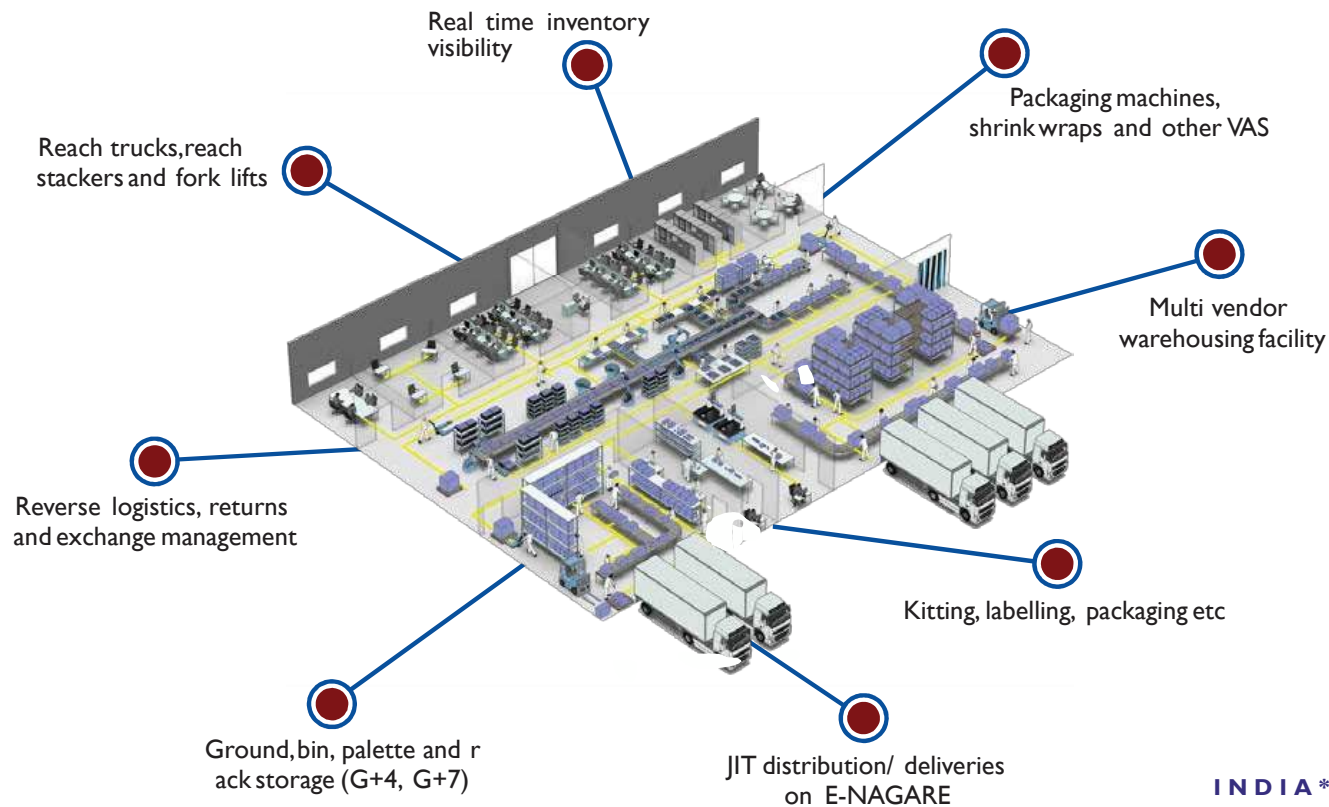
LOCATION ADVANTAGE



GUJARAT PROJECT - LOCATION



GUJRAT PROJECT - BECHARAJI LOGISTICS CENTER, 150,000 SQ. FT.





ありがとう

THANK YOU

VISIT US ON: WWW.IRCGROUPGLOBAL.COM

INDIA*JAPAN*SINGAPORE